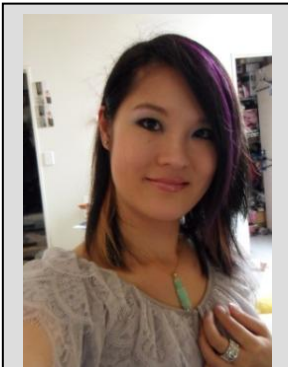


Settlement Support New Zealand Auckland City – Tāmaki-makau-rau

Tirohia atu nei ka wheturangitia Matraiki, te whetu o te tau. (Heralding the beginning of the New Year)



Hōngongi (July)/Issue 20



Bevan Chuang,
Settlement Support
Coordinator –
Auckland City

Haere Mai, Nau Mai, Haere Mai

Kei te pēhea koutou? Welcome to the twentieth Settlement Support New Zealand—Auckland City Newsletter.

The objective of this newsletter is to provide you with information about what Settlement Support – Auckland City does, where you can find information about employment, education, health services and many other aspects of settling in New Zealand. This is also an opportunity to share with you the services which are available around Auckland city.

Please feel free to pass on this newsletter onto friends, family and community colleagues.

Updates from Settlement Support New Zealand – Auckland City



SETTLEMENT SUPPORT
NEW ZEALAND

Connecting newcomers locally

Last week of June was a very busy day for ARMS and SSNZ Auckland! 4 events in one week!

Regional Settlement Network – Inaugural meeting

The Inaugural Regional Settlement Meeting was held at the Auckland Regional Council on Thursday 24th June 2010. Over 90 people attended the event featuring Dr Ward Friesen from the University of Auckland. The Settlement Newsletter was also launched; you can get a copy from our website <http://www.arms-mrc.org.nz>. Please contact Carolyn Day at carolynnd@arms-mrc.org.nz if you wanted copies of the PowerPoint presentations.

International Refugee Day Celebration

ARMS, together with Refugees Services Aotearoa and the Auckland Refugee Community Coalition hosted International Refugee Day celebration at the Fickling Centre on Friday 25th June 2010. The event was very well attended and received, including visit by Leader of Opposition Phil Goff, speeches by National List MP Dr Jackie Blue, Green Party MP Mr. Keith Locke. You can watch the amazing performances and speeches on <http://www.youtube.com/Ssanzauckland>.

Migrant Expo 2010

SSNZ were proudly there at the Migrant Expo 2010, at the ASB Showgrounds on Saturday 26th June. We were giving away fridge magnets and note pads, talking to clients about SSNZ, catching up with other service providers. Check out the pictures on ARMS' Facebook Page - <http://bit.ly/cdq7iM>.

Orientation Bus Tour

Auckland Regional Council has funded another Orientation Bus Tour which took place on Sunday 27th June. We had a great time travelling around the Botanic Gardens, Arataki Visitor Centre at the Waitakere Range, Devonport, Auckland CBD, the Auckland Museum, and the Mt Eden. Check out the pictures of our trip and the beautiful scenery on our Facebook Page - <http://bit.ly/boWjK7>.

The 4th International Health and Wellbeing Conference

The 4th International Health and Wellbeing Conference was hosted by the Centre for Asian Health and Evaluation (CAHRE), the Faculty of Medical and Health Sciences, University of Auckland on the 5th and 6th July 2010. The focus of the day was on the holistic approach to Asian Health. You can find out more on <http://bit.ly/9jFG6f>.





Updates from Department of Labour.

How to handle parental leave requests from your staff

If you have received a request for parental leave here are three things to do to get started.

Department of Labour
TE TARI MAHI



1. Find out what your employee is eligible for

The Department of Labour's [online calculator](http://bit.ly/abG7SZ) (<http://bit.ly/abG7SZ>) can help you determine if your employee is entitled to take parental leave and receive government funded parental leave payments.

The maximum rate of payment for government funded parental leave is adjusted on 1 July each year. On 1 July 2010, the maximum payment will increase from \$429.74 to \$441.62 per week (gross). This means that employees will be entitled to either their gross weekly rate of pay or \$441.62, whichever is lower.

Employees must apply to [Inland Revenue](http://bit.ly/96cHnu) (<http://bit.ly/96cHnu>) for payments and to their employer for the leave.

2. Respond appropriately to requests

As an employer you are required to reply to your employees parental leave request in writing and your response should cover:

- Whether the employee is entitled to take parental leave, and if not, the reasons why not
- The main legal rights and obligations they have, especially those relating to when they can start their leave
- Whether the job can be kept open or not. If it cannot, the letter should explain that they are entitled to dispute that. It should also explain that they will have preference for placement in similar jobs for six months after the end of the parental leave.

[Templates for responding to an employees request](http://bit.ly/dhJqsk) (<http://bit.ly/dhJqsk>)

3. Understand how parental leave effects other leave entitlements

Employment is treated as continuous during the period of parental leave. Annual leave and sick leave continues to accrue while an employee is on parental leave. If an employee becomes entitled to annual leave while on parental leave or during the 12 month period after they return, special rules apply.

The payment rate that attaches to this entitlement will be at the employee's average weekly earnings for the 12 months before the annual holiday is taken. The average weekly earnings calculation would not be compared to the ordinary weekly pay as would normally occur. [Find out more about accrual of annual leave during a period of parental leave](http://bit.ly/cRo7js) (<http://bit.ly/cRo7js>).

No special rules apply to sick leave that is accrued while an employee is on parental leave.

[Get more information on parental leave](http://bit.ly/b1hbh4) (<http://bit.ly/b1hbh4>).

Casual Employment

While Casual Employment is not defined in legislation such as the Employment Relations Act 2000 and the Health and Safety in Employment Act 1992, it is taken to mean that employment on an 'as and when' required basis, with no guarantee of set hours or continuation of employment. In practice though some casual employees do have an ongoing employment relationship with an employer.

All employees (including casual employees) are entitled to minimum rights and entitlements under the New Zealand employment relations framework, including employment agreements, annual leave, public holidays, sick leave and bereavement leave.

When it comes to ending an employment relationship, a casual employee has the same rights as for any other employee, and employers must follow the same dismissal procedures. These include having reasonable grounds for dismissal, discussing this with the employee and allowing reasonable opportunity for the employee to respond.

For further information please see the Department of Labour employment relations website www.ers.govt.nz or phone the Contact Centre on 0800 20 90 20. To help create an employment agreement you can use the Employment Agreement Builder, which can be found at <http://bit.ly/c4FDEn>. To help work out entitlements under the Holidays Act, you can use the Holidays On-Line Tool, which can be found at <http://bit.ly/9OdgA1>.





Updates On Immigration Act

The dates for implementation of the Immigration Act 2009 have been confirmed by the Minister of Immigration.

General commencement, the date when the majority of the Act's provisions will come into effect, will be on 29 November 2010. This is also the date that the new Immigration and Protection Tribunal will begin operating.

Section 477 of the Act will come into effect earlier, on 2 August 2010. This section allows for early implementation of VisaView, an online system that employers can use to check the work entitlement of prospective employees. This will assist employers to only employ those people who have the right to work in New Zealand.

Provisions relating to interim visas will be introduced by April 2011.

The carrier infringement regime (a fines system for breaches of the Act by carriers) will be trialled during March and April 2011 with a view to full implementation by early 2012.

The timing for commencement of the provisions relating to biometric information and new compliance powers for immigration officers will be confirmed at a later date. These provisions will come into effect via Orders in Council, once Cabinet is satisfied that the appropriate training and operating instructions have been developed and that appropriate safeguards are in place.

Fact sheets and FAQs are available at www.dol.govt.nz/actreview. These pages will continue to be updated as we move toward 29 November.

If you have any queries or would like more information about a specific area of the Act, please email actreview@dol.govt.nz.

Call for Submissions on the establishment of the Pacific Peoples Advisory Panel for Auckland

The mayor of the Auckland Council is required by section 86 of the Local Government (Auckland Transitional Provisions) Act 2010 to establish and appoint a Pacific Peoples Advisory Panel (Panel) not later than 31st March 2011.

In addition, the Chief Executive of the Ministry of Pacific Island Affairs (MPIA) must develop proposals in relation to the establishment of the Panel for the consideration of the mayor by 1st November 2010 as required under section 50 of the Local Government (Tamaki Makaurau Reorganisation) Act 2009.

- **Written submissions** Public submissions are now being invited by MPIA on the establishment of the Pacific Peoples Advisory Panel. These submissions will be considered by the Chief Executive in formulating the proposal to the mayor of Auckland.
- **A discussion document** outlining the issues the Ministry seeks public views on is available on the MPIA website www.mpia.govt.nz or from the MPIA Auckland Office. The ministry requests two copies of each submission if made in writing. These should be sent to PO Box 97005 South Auckland Mail Centre 2240.
- Alternatively electronic submissions can be made by email to pacific.panel@mpia.govt.nz **Submissions close 12pm Friday, 6 August 2010.**
- **Public Fono** MPIA also invites members of the public to attend fono to discuss the proposed Panel. The purpose of the fono is to allow discussion to take place on the proposal the Chief Executive will make to the Mayor on the formation of the Panel. These fono will be an opportunity for the Ministry to hear the views of the public on issues relating to the Panel. The Ministry discussion document sets out the types of questions to be discussed at the fono.
- The public fono will be held at:
- **Central/West Auckland/North Shore/Rodney fono:** Monday 2nd August 2010 6.00pm – 7.30pm Western Springs Gardens Community Hall 956 Great North Road, Western Springs
- **South Auckland/Counties Manukau/Franklin fono:** Tuesday 3rd August 2010 6.00pm – 7.30pm Nga Tapuwae Community Centre 253 Buckland Road, Mangere
- For any inquiries regarding the written submission process or the public meetings please contact: **MPIA Auckland Office - 09 262 1513 PO Box 97005 South Auckland Mail Centre 2240 or the MPIA website: www.mpia.govt.nz**



What's Coming Up?

Workshops

**All free and conducted in English unless otherwise stated.*

Job Search Workshop

6th and 20th July, 9.30am—3.00pm

Workshop to assist with your job search. Held in conjunction with Career Services and the Auckland Chamber of Commerce and other agencies.



Legal Clinics

Fridays, 9.30am—12.00pm

Heval Hylan, Principal of Hylan Law Barrister & Solicitor, will be providing free 10-minutes legal advice on immigration, family law, contract, trusts and other areas of law in general.



Financial Advice

Fridays, 10.00am – 12.00pm

Tina Chen, founder of TC Financial Planning Ltd, will be providing free 10-minutes financial and budgeting advice, in English, Mandarin or Cantonese.



Pronunciation Guidance Course (5 weeks course, \$195/person)

Saturdays 10th, 17th, 24th, 31st July and 7th August, 4.00pm – 6.00pm

Learn how to produce intelligible English communication and understand the Kiwi accent and the use of English. Learn how to manage individual accents derived from original language and culture.



Small Business Tax Seminar

Saturday, 10th July 2010, 9.30am – 12.00pm

A seminar runs by Inland Revenue. Save time and money by finding out about business tax management skills. Covers tax obligations, record keeping, filing returns and due dates, set up systems, incomes and expenses, GST and provisional tax.



Managing Your Money – Banking Products, Services, Budgeting and Financial Advice

Saturday, 24th July 2010, 9.30am – 12.30pm

Learn about the different banking products and services and what kinds of financial advice are available. What are the different types of accounts and payments? How do you get a mortgage? What are the ways of acquiring a property? Insurance, investment, retirement planning, KiwiSaver, and other related products and services. How do you do budget planning?



Managing Your Money – Banking Products, Services and Financial Advice (in Mandarin)

Saturday, 31st July 2010, 9.30am – 12.30pm

Learn about the different banking products and services and what kinds of financial advice are available. What are the different types of accounts and payments? How do you get a mortgage? What are the ways of acquiring a property? Insurance, investment, retirement planning, KiwiSaver, and other related products and services.



For more information or to register contact ARMS on 09 625 2440 or reception@arms-mrc.org.nz.

Have you been forwarded this newsletter?

If you've been forwarded this newsletter and you wish to subscribe email ssnzauckland@arms-mrc.org.nz.

If you would like to change your subscription details or unsubscribe email

ssnzauckland@arms-mrc.org.nz.

Have you got any suggestions or feedback about the newsletter? Please email

ssnzauckland@arms-mrc.org.nz

For settlement information, visit: www.immigration.govt.nz/settlement

SETTLEMENT SUPPORT NEW ZEALAND

SSNZ Auckland,

Auckland Regional Migrant Services, Three Kings Plaza,

532 Mt Albert Road, Three Kings, Auckland

Phone: 09 625 2440 Fax: 09 625 2445

Email: ssnzauckland@arms-mrc.org.nz Visit: www.arms-mrc.org.nz



Auckland Regional Migrant Services
Charitable Trust

Department of Labour
TE TARI MAHI



New Zealand Government



NEW ZEALAND CHINESE ASSOCIATION
AUCKLAND INC
紐西蘭屋崙華聯會

PRESENTS:

Pip's Children's Choir - New Zealand Concert Tour 2010

葉氏兒童合唱團紐西蘭巡迴表演2010

Tuesday 20th July 2010 7.00pm

2010年7月20日星期二晚上7時

Selwyn College, Kohimarama Road, Kohimarama

The choir from Hong Kong is internationally renowned for its excellence and since 1984 has performed in over 38 countries in six continents. For this tour, the choir will have 50 members aged 11 to 17, singing a wide range of traditional & modern songs in English and a bracket of Yunnan folk songs in Mandarin, plus solo instrumentalists and dances.

來自香港的世界知名合唱團從1984年開始在六大州超過38個城市演出。此巡迴表演將包括50名11到17歲的團員，唱出不同的傳統與現代英語歌曲與以普通話唱出雲南傳統歌曲和獨奏與舞蹈。

Cost: \$15 per person / \$120 for group of 10

**Meeting and greetings with Choir for Pre-Show Buffet Dinner at 5.30 pm:
\$10 per person**

價錢：每人\$15/十人\$120

與合唱團團員會面與表演前自助餐 - 晚上5點半：每人\$10

Contact 聯絡: Kai Luey 522 1840 / 021 333 125

Bevan Chuang 莊家欣 625 3039 / 021 802 830

PROUDLY SUPPORTED BY: 贊助商全力支持：



skykiwi.com
Interact no boundaries





Introduction

Hong Kong Festival (Auckland 2010)

Returning in August to the Newmarket area for the second year, this annual celebration of the vibrant Hong Kong arts, culture and cuisine will explode your senses. As a sequel to our successful film festival event in 2009, we have lined up an exciting selection of the latest Hong Kong blockbusters for this year, showcasing the best of the Hong Kong cinema. And there's more, the Hong Kong Festival is the place to be at to truly experience the Hong Kong culture. With our newly added item - the "street" festival event - where we will bring to the centre of Newmarket a miniature Hong Kong style night market, adding vivid colours and atmosphere to the area with authentic Hong Kong specialty food & arts and live performances. If it is something fresh you are after, we have a photography display exploring various Hong Kong facets and scenes. With a tasteful selection of visual arts, the exhibition will bring a new perspective of Hong Kong. Join us to celebrate the vibrant arts, culture and cuisine of Hong Kong! For more information, visit our festival website: www.hkfilmfestival.co.nz, and join us on Facebook for great competitions and to experience & explore Hong Kong!

What is it?

Event name: **Hong Kong Festival**

Start and finish date: **August 12 – 18**

One- or two-sentence synopsis of the event: **The Hong Kong Festival is an annual celebration of the Hong Kong arts and culture. Through our various festival items, including the Hong Kong Film Festival, a Night Market, Hong Kong Photography Exhibition, we hope to share the finest Hong Kong arts and the vibrant Hong Kong atmosphere with the local community.**

Start (and if possible, finish) time: **Throughout the festival week**

Street address: **Rialto Shopping Centre, 163 Broadway, Newmarket, Auckland**

Any cost: **Various**

Contact phone number: **Raymond Suen, Festival Director - BUS: (022) 606 3812; MOB: (021) 893382;**

WEB: www.hkfilmfestival.co.nz



Migrants Support Services Inc.

101, Church Street, Onehunga, Auckland

Ph: (09) 6367334 Fax: (09) 6367354

Email: mss_inc2003@yahoo.co.nz

School Holiday Programme (OSCAR)

For Whom:

For everyone between the age of 5 and 14!

Cost:

\$15 per day or \$65 for 5



When:

12th July – 16th July 10!

Time:

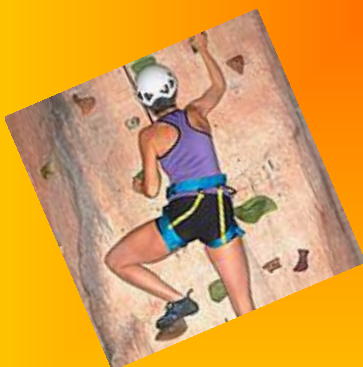
9.00 am to 3.00 pm!

Activities:

- Rock Climbing
- Visit to Auckland Museum
- Computer Animation
- Paint & Create Workshop
- Storytelling
- Movie
- Music/Dance
- Art & Craft
- Cooking
- Party

Where:

Onehunga Community Centre,
83 Church Street, Onehunga



To register please contact - Jyoti
Phone: 6367334
Fax: 6367354
Email: mss_inc2003@yahoo.co.nz

Get in Quick

*Programme is supported by Ministry of Social Development and
Auckland City Council*