

Settlement Support New Zealand Auckland City



*Nāu te rourou, nāku te rourou ka ora te manuwhiri
With your basket and my food basket the guests will have enough. (May each contribute.)*

April 2009/Issue 05



Bevan Chuang,
Settlement Support
Coordinator –
Auckland City

Tēnā Koutou

Greetings to you all! Welcome to the fifth Settlement Support New Zealand—Auckland City Newsletter.

The objective of this newsletter is to provide you with information about what Settlement Support New Zealand does, where you can find information about employment, education, health services and many other aspects of living in New Zealand. This is also an opportunity to share with you the services which are available around Auckland city.

Please pass this newsletter onto friends, family and community colleagues.

Women's Health Matters

SSNZ Auckland City conducted a women's health workshop facilitated by WONS: Nursing, Education and Health Promotion Services on 18th March at the ARMS Three Kings Resource Centre. The workshop was attended by migrant and refugee women and it focused on the importance of preventive health such as cervical screening, breast screening and cervical cancer vaccine for young women aged 12 to 18.



Watch out for the story on Asia Downunder later this month on TV1, Sunday mornings at 10.30am. To find out more about WONS at <http://www.wons.org.nz>.

Breast Screening

Where can I get my Breast Screening done? I don't live around Newmarket/Remuera. Breast Screen Auckland has a mobile unit which visit different areas. You do need to book early. Here's the schedule for 2009.

Location	Start Date	Finish Date	Address
Glen Innes	16/3	29/4	To be advised
Mt Albert	4/5	3/6	YMCA Community Centre, New North Rd, Mt Albert
Mt Roskill	8/6	1/7	Fickling Centre, Three Kings Plaza Mt Roskill
Remuera	3/7	12/7	Breast Screen Auckland – MacMurray Rd
Waiheke Island	13/7	3/7	Outside Placemakers – Ostend
Onehunga	3/8	2/9	Langimalie Health Clinic, 29 Hill St
Kohimarama	7/9	7/10	ASB Stadium, Cnr Kepa Rd & Kohimarama Rd
Mt Wellington	12/10	11/11	Mt Wellington Community Church. Cnr Waipuna Rd and Mt Wellington Highway
Avondale	16/11	9/12	Avondale Community Centre, 99 Rosebank Road
Takanini	9/12	January 2010	Annual maintenance at Maxitrans

This schedule is subject to change, for confirmation please ring 09 522 4765.

Twitter!

A growing number of NGOs, not-for-profit organisations and even the Guardian have joined the social networks such as Facebook and Twitter as an important marketing tool to communicate with their stakeholders.

Check out: <http://webguide.net.nz/2007/why-should-not-for-profit-organisations-use-social-media-five-good-reasons/> and http://www.canadianmarketingblog.com/archives/2009/01/using_social_networking_tools.html

SSNZ Auckland City has joined the latest craze and is now on Twitter! Catch what Settlement Support Coordinator – Auckland City is doing by following her at <http://twitter.com/SSNZ Auckland>.





ANZAC Day

ANZAC Day is a national public holiday in Australia and New Zealand, and is commemorated by both countries on 25th April every year to honour members of the Australian and New Zealand Army Corps (ANZAC) who fought at Gallipoli in Turkey during World War I. ANZAC Day is also observed in the Cook Islands, Niue, Samoa and Tonga.



Throughout New Zealand, people of all ages wear a red poppy as a mark of remembrance for the men and women who have died in the course of service for their country.



Victory celebrations Queen St, Auckland

8556 New Zealanders landed in Gallipoli, 4852 (57%) of them were wounded and 2721 (32%) died. New Zealand soldiers were courageous and skilful; they have established an enduring bond with the Australians they fought alongside. The wall is a significant part of the history, and ANZAC Day no longer just commemorates the 18,000 New Zealanders who died in WW1, but all those who fought and list their lives for their country.

Every year, more than 200,000 New Zealanders attend the commemorative services are held at dawn, the time of the original landing. In Auckland, one of the most significant ANZAC Dawn Ceremonies is held at the Cenotaph of the Auckland Domain.



Prime Minister Helen Clark lays a wreath at the cenotaph

For more information visit www.anzac.govt.nz, <http://www.rsa.org.nz/> or www.aucklandmuseum.com/127/anzac_days_2009

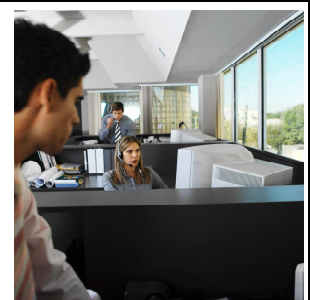
Images from Auckland Museum

Employment and Economic Downturn

There have been many stories lately about the impact of economic downturn and migrant workers. Please visit http://www.arms-mrc.org.nz/Doc/Publication/Press_CampbellLive.pdf for our response to Campbell Live's story on 17th March.

Employers are still seeking new employees and being a migrant means you have equal rights as any other New Zealanders.

If you or someone you know is looking for employment, visit our Job Search workshop every Tuesday from 9am – 3pm! We are here to help!



Are you looking for employment?

www.newkiwis.co.nz is a free national jobsite for skilled migrant job seekers eligible to work in NZ. Kiwi Employers seeking your skills will download your CV and contact you directly. Search our "job vacancy" section – just be aware many employers search the database without posting their vacancy.

Don't have a CV?

Once you register your information an automated PDF CV will be created for you.

Are you eligible to work in NZ?

Visit: <http://www.immigration.govt.nz/migrant/stream/work/> to find out if you are.

New Kiwis is a partnership project between the Auckland Chamber of Commerce and Department of Labour.

Department of Labour
TE TARI MAHI





What's Coming Up?

Workshops

Job Search Workshop

Every Tuesday, 9.30am—2pm, **FREE**

Workshop to assist with your job search. Held in junction with Work & Income NZ, Career Services and the Auckland Chamber of Commerce.



Marae Visit

Saturday 18th April, 9am - 4pm, **REGISTRATION ESSENTIAL, FEES APPLY**

Introduction to Maori history, life and culture. Flax weaving, Maori songs and haka. Traditional hangi lunch; free bus to Orakei Marae



For more information or to register contact ARMS on 09 625 2440 or reception@arms-mrc.org.nz. For information about workshops in 2009 visit www.arms-mrc.org.nz

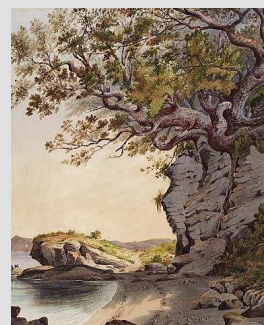
Some interesting knowledge – Settlement Support have been around since 1879!

From by Shaw, Savil & Co., 34 Leadenhall St., London. Excerpt from Charles Hursthouse, *The New Zealand Handbook, or Guide to the Britain of the South*, Edward Stanford

(Re-published by Wolfe, R., 2006 *Instructions for New Zealanders*. Auckland: Random House)

"New Immigrants – Arrival in the Colony:

On reaching their destination, our passengers have the right of remaining on board 48 hours after arrival, and in any little matters of doubt or difficulty, sometimes arising when strangers first land in a new country, our Representatives at the port of arrival will gladly afford them any information or advice which they may require."



Oyster Cove, North Head, Auckland, Alfred Sharpe, 1879, Auckland Art Gallery Toi o Tamaki, gift of Norman B Spencer, 1967

Did You Know?

Employment and immigration issues continue to be high on the list amongst new comers. 1/3 of the clients visited SSNZ Auckland City/ARMS between January – March 2009 wanted information about employment and another 1/3 about immigration.

Public Holiday!

SSNZ and ARMS will be closed between 10th – 13th April for Easter holidays and 25th April for ANZAC Day.

Have you been forwarded this newsletter?
If you've been forwarded this newsletter and you wish to subscribe email ssnzauckland@arms-mrc.org.nz.

If you would like to change your subscription details or unsubscribe email ssnzauckland@arms-mrc.org.nz.
Have you got any suggestions or feedback about the newsletter? Please email ssnzauckland@arms-mrc.org.nz

SETTLEMENT SUPPORT NEW ZEALAND – Auckland City

532 Mt Albert Road
Three Kings 1440
AUCKLAND

Phone: **09 625 2440**
Fax: **09 625 2445**
Email: ssnzauckland@arms-mrc.org.nz
Visit: <http://www.arms-mrc.org.nz/SettlementServices.aspx>



TE TARI MAHI
Department
of Labour



For settlement information, visit: www.immigration.govt.nz/settlement